

# 1200 SERIES (Right Angle Type)

## FEATURE

Insulator Material : PBT UL94V-0  
 Contact Material : Phosphor Bronze  
 Plating : Selective Gold Plating Over Nickel On Contact Area  
 100μ" Tin Plating On Tail Section  
 50μ" Nickel Underplating

## SPECIFICATION

Current Rating : 3 Ampere  
 Contact Resistance : 20 milliohms maximum  
 Insulation Resistance : 5000 megohms minimum  
 Voltage Rating : 800 VAC 1 minute  
 Operation Temperature Range : -55°C to +105°C  
 Insertion Force : 412 grams max. per pair  
 Withdrawal Force : 32 grams min. per pair

## ORDERING INFORMATION

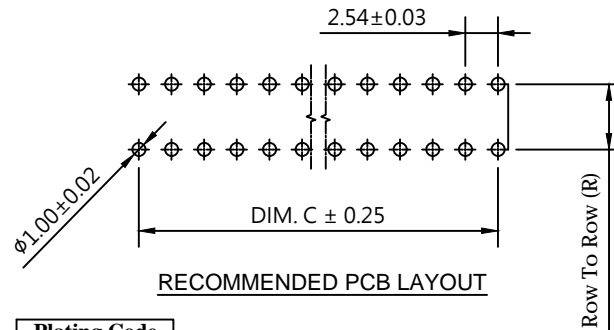
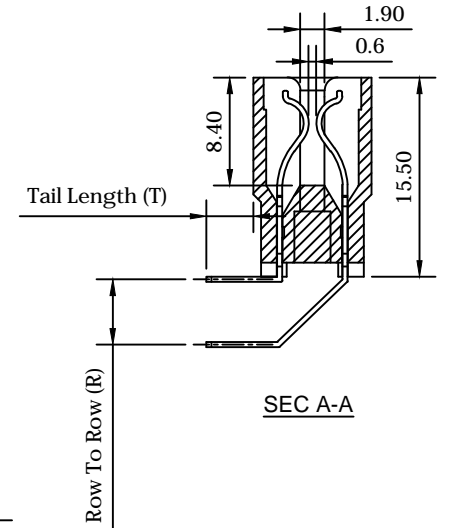
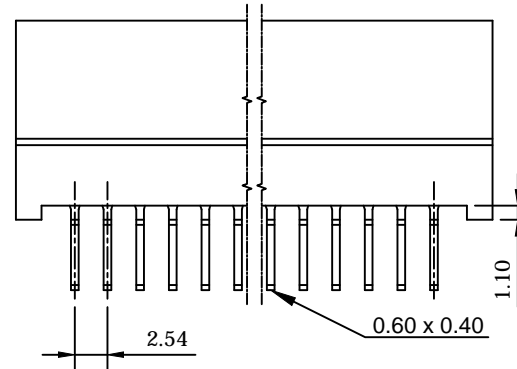
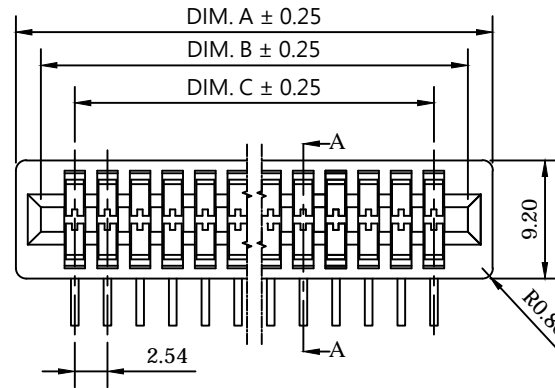
1200 - □□□ - □ - □ - □ - □



No. of Contacts	Dimensions (Dim.)			No. of Contacts	Dimensions (Dim.)		
	A	B	C		A	B	C
2/4	11.68	7.82	2.54	19/38	54.86	51.00	45.72
3/6	14.22	10.36	5.08	20/40	57.40	53.54	48.26
4/8	16.76	12.90	7.62	22/44	62.48	58.62	53.34
5/10	19.30	15.44	10.16	24/48	67.56	63.70	58.42
6/12	21.84	17.98	12.70	25/50	70.10	66.24	60.96
7/14	24.38	20.52	15.24	30/60	82.80	78.94	73.66
8/16	26.92	23.06	17.78	31/62	85.34	81.48	76.20
9/18	29.46	25.60	20.32	32/64	87.88	84.02	78.74
10/20	32.00	28.14	22.86	35/70	95.50	91.64	86.36
11/22	34.54	30.68	25.40	36/72	98.60	94.18	88.90
12/24	37.08	33.22	27.94	37/74	100.58	96.72	91.44
13/26	39.62	35.76	30.48	40/80	108.20	104.34	99.06
14/28	42.16	38.30	33.02	43/86	115.82	111.96	106.68
15/30	44.70	40.84	35.56	49/98	138.68	134.82	129.54
16/32	47.24	43.38	38.10	50/100	133.60	129.74	124.46
17/34	49.78	45.92	40.64	54/108	143.76	139.90	134.62
18/36	52.32	48.46	43.18				

Tail Length (T)	
A	3.50
B	6.00
C	10.80

Row to Row (R)	
A	5.08
B	3.81
C	3.00
D	2.54



Plating Code	
1	10μ"
2	G/F
3	3μ"
4	5μ"
5	G/F Overall
6	30μ"
7	Tin Overall
8	15μ"
9	20μ"

Title : Customer Drawing		Type : Edgecard Connector		彩電企業股份有限公司 CHARTRON INCORPORATION			
Part No. : 1200 Series							
Description : Pitch 2.54 mm Edge Card Connector Right Angle Dip Type Without Mounting Ear				Tolerances Unless Otherwise Specified :			
X. ± 0.50		.X ± 0.38		.XX ± 0.25			
X. ° ±		.X ° ±		.XX ° ±			
DWG No. : 010 - 0000 - 512		Date : 10 - Apr. - 2018		Dim.		Scale	
APPD. : James C.		CHK. : Connie Z.		mm		N/A	
DRW. : Bryant C.				Sheet		Rev.	
				1 of 1		J	